



Classified by
Underwriters Laboratories, Inc.
to UL 1479.

System No. W-J-8004

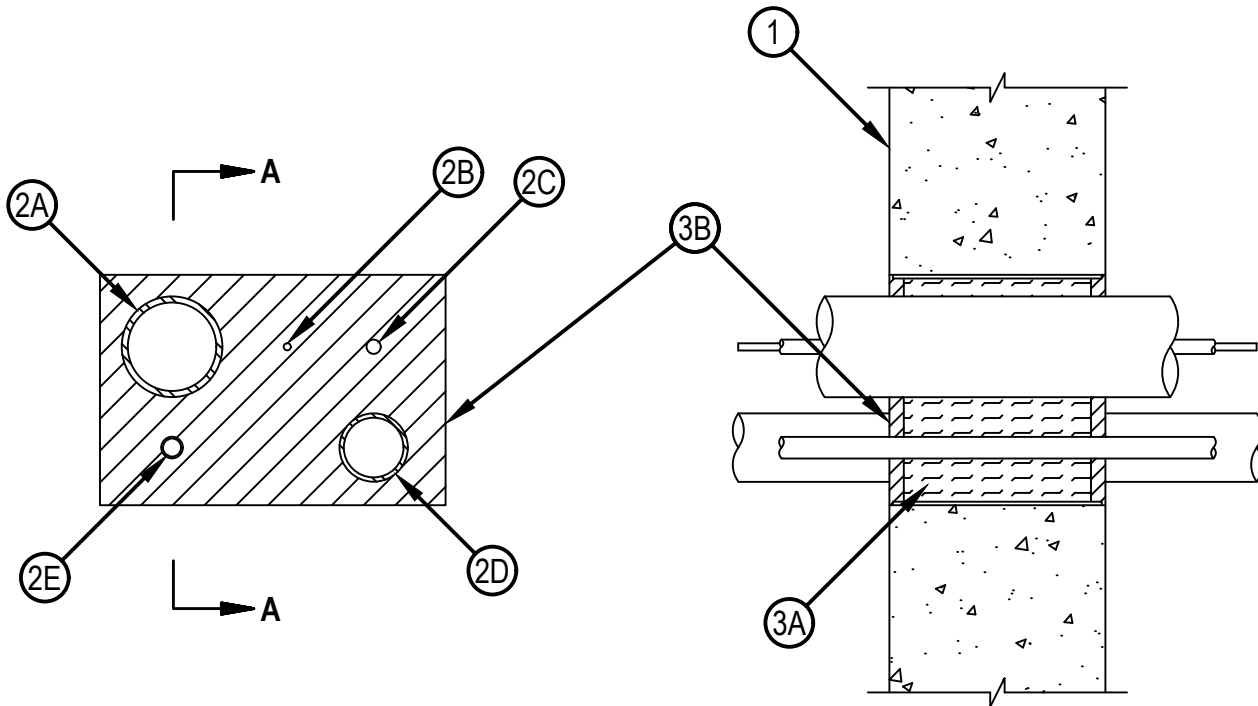
F Rating — 2 Hr

T Rating — 1/4 Hr

L Rating At Ambient — Less Than 1 CFM/Sq Ft

L Rating At 400 F — 4 CFM/Sq Ft

WJ 8004



SECTION A-A

1. Wall Assembly — Min 5 in. (127 mm) thick reinforced lightweight or normal weight (100-150 pcf) (1600-2400 kg/m³) concrete. Wall may also be constructed of any UL Classified Concrete Blocks*. Max area of opening is 96 sq in. with max dimension of 12 in. (305 mm)
See Concrete Blocks (CAZT) category in the Fire Resistance Directory for names of manufacturers.
2. Through Penetrants — The following types and sizes of pipes, conduits, tubing or cables may be used:
 - A. Nom 3 in. (76 mm) diam (or smaller) electrical metallic tubing (EMT).
 - B. Max 25 pair — No. 24 AWG (or smaller) telephone cable with polyvinyl chloride (PVC) insulation and jacket.
 - C. Max 3/C with ground — No. 10 AWG (or smaller) Type NM cable with PVC insulation and jacket.
 - D. Nom 2 in. (51 mm) diam (or smaller) Schedule 40 PVC pipe for use in closed (process or supply) piping systems only.
 - E. Max 300 kcmil (or smaller) power cable with PVC insulation and nylon jacket.



Hilti Firestop Systems

Reproduced by HILTI, Inc. Courtesy of
Underwriters Laboratories, Inc.
April 26, 2017

System No. W-J-8004

WJ 8004

The through penetrating items to be rigidly supported on both sides of the wall assembly and located as shown in the table below:

Item No.	Max Distance Between Adjacent Pen. Item In.	Min Distance Between Adjacent Pen. Item In.	Max Distance From Through Opening In.	Min Distance From Through Opening In.
2A	7-7/16 (189)	1-11/16 (43)	12 (305)	1/2 (13 mm)
2B	7-7/16 (189)	1-11/16 (43)	12 (305)	1/2 (13 mm)
2C	7-7/16 (189)	1-11/16 (43)	12 (305)	1/2 (13 mm)
2D	7-7/16 (189)	1-11/16 (43)	12 (305)	1/2 (13 mm)
2E	7-7/16 (189)	1-11/16 (43)	12 (305)	1-1/2 (32 mm)

3. Firestop System — The firestop system shall consist of the following:

A. Packing Material — Min 4.0 in. (102 mm) thickness of min 3.5 pcf (56 kg/m³) mineral wool batt insulation firmly packed into opening as a permanent form. Packing material to be recessed from both surfaces of wall as required to accommodate the required thickness of fill material.

B. Fill, Void or Cavity Material* — Sealant — Min 1/2 in. (13 mm) thickness of fill material applied within the annulus, flush with both surfaces of wall.

HILTI CONSTRUCTION CHEMICALS, DIV OF HILTI INC — FS-One Sealant or FS-ONE MAX Intumescent Sealant

* Indicates such products shall bear the UL or cUL Certification Mark for jurisdictions employing the UL or cUL Certification (such as Canada), respectively.



Hilti Firestop Systems

Reproduced by HILTI, Inc. Courtesy of
Underwriters Laboratories, Inc.
April 26, 2017

Page: 2 of 2