

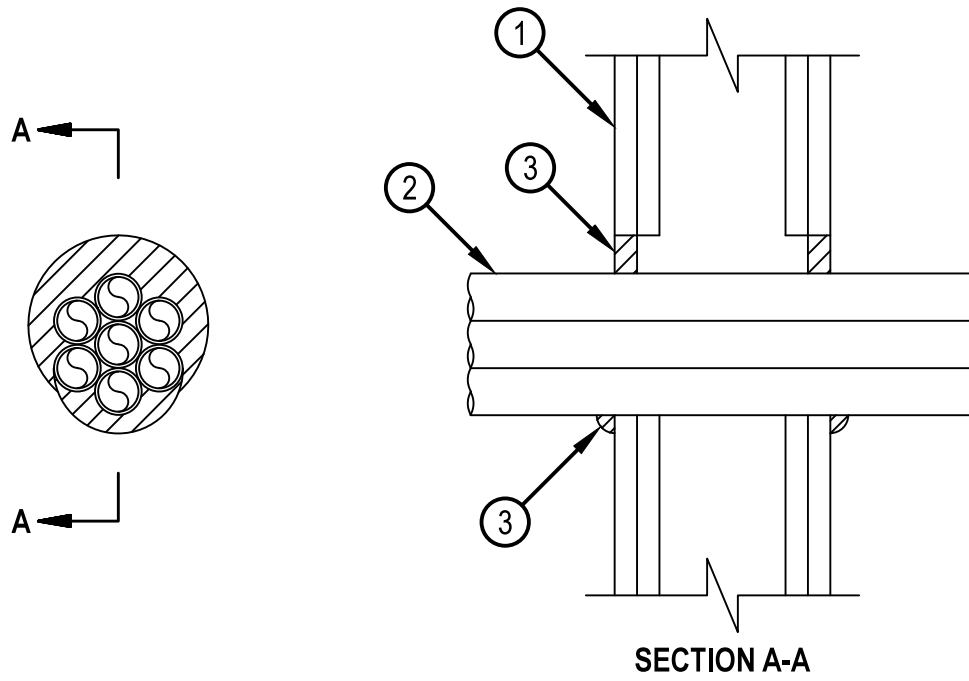


Classified by  
Underwriters Laboratories, Inc.  
to UL 1479

## System No. W-L-2467

F Ratings - 1 and 2 Hr (See Item 1)  
T Rating - 1 Hr

WL 2467



1. Wall Assembly — The 1 or 2 hr fire rated gypsum board/stud wall assembly shall be constructed of the materials and in the manner specified in the individual U300, U400, V400 or W400 Series Wall and Partition Designs in the UL Fire Resistance Directory and shall include the following construction features:
    - A. Studs — Wall framing may consist of either wood studs or steel channel studs. Wood studs to consist of nom 2 by 4 in. (51 by 102 mm) lumber spaced 16 in. (406 mm) OC. Steel studs to be min 3-1/2 in. (89 mm) wide and spaced max 24 in. (610 mm) OC.
    - B. Gypsum Board\* — 5/8 in. (16 mm) thick, 4 ft (1.22 m) wide with square or tapered edges. Thickness, type, number of layers and fasteners as required in the individual Wall and Partition Design. Max diam of opening is 5 in. (127 mm).The hourly F Ratings of the firestop system is equal to the hourly fire rating of the wall assembly in which it is installed.
  2. Through Penetrant — One max 4 in. (102 mm) diam tight bundle of tubes located eccentrically or concentrically within opening. The annular space between bundle of tubes and periphery of opening shall be min 0 in. (point contact) to max 1 in. (25 mm). Tubing to be rigidly supported on both sides of wall assembly. The following types of tubing may be used:
    - A. Crosslinked Polyethylene (PEX) Tubing — Nom 1 in. (25 mm) diam (or smaller) SDR 9 PEX tubing for use in closed (process or supply) piping systems.
  3. Firestop System — The firestop system shall consist of the following:
    - A. Fill, Void or Cavity Material\* - Sealant — Min 5/8 in. (16 mm) thickness of fill material applied within annulus, flush with each surface of wall. Min 1/2 in. (13 mm) diam bead of caulk applied to the tubing/gypsum interface at the point contact location on both sides of wall.  
HILTI CONSTRUCTION CHEMICALS, DIV OF HILTI INC — FS-ONE Sealant or FS-ONE MAX Intumescent Sealant
- \* Indicates such products shall bear the UL or cUL Certification Mark for jurisdictions employing the UL or cUL Certification (such as Canada), respectively.



Reproduced by HILTI, Inc. Courtesy of  
Underwriters Laboratories, Inc.  
January 22, 2015