

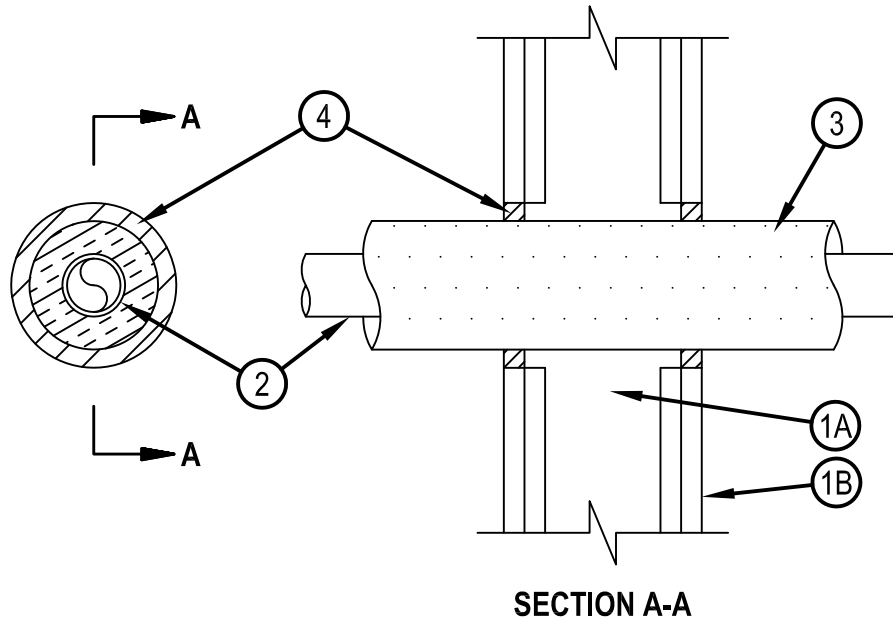


Classified by  
Underwriters Laboratories, Inc.  
to UL 1479

## System No. W-L-5293

WL 5293

ANSI/UL1479 (ASTM E814)	CAN/ULC S115
F Ratings - 1 and 2 Hr (See Item 1)	F Ratings - 1 and 2 Hr (See Item 1)
T Ratings - 1 and 2 Hr (See Item 1)	FT Ratings - 1 and 2 Hr (See Item 1)
	FH Ratings - 1 and 2 Hr (See Item 1)
	FTH Ratings - 1 and 2 Hr (See Item 1)



- Wall Assembly** — The 1 or 2 hr fire rated gypsum board/stud wall assembly shall be constructed of the materials and in the manner specified in the individual U300, U400, V400 or W400 Series Wall and Partition Designs in the UL Fire Resistance Directory and shall include the following construction features:

    - Studs** — Wall framing may consist of either wood studs or steel channel studs. Wood studs to consist of nom 2 by 4 in. (51 by 102 mm) lumber spaced max 16 in. (406 mm) OC. Steel studs to be min 3-1/2 in. (89 mm) wide and spaced max 24 in. (610 mm) OC.
    - Gypsum Board\*** — Thickness, type, number of layers and orientation shall be as specified in the individual Wall and Partition Design. Max diam of opening is 5 in. (127 mm).

The hourly F, T, FT, FH and FTH Ratings of the firestop system are equal to the hourly fire rating of the wall assembly in which it is installed.
  - Through Penetrants** — One Chlorinated Polyvinyl Chloride (CPVC) Pipe nonmetallic pipe to be installed concentrically or eccentrically within the firestop system. Nom 1-1/2 in. (38 mm) diam (or smaller) SDR 11 or SDR 13.5 CPVC pipe for use in closed (process or supply) piping systems. Pipe to be rigidly supported on both sides of wall.
  - Pipe Covering\*** — Nom 1 in. (25 mm) thick hollow cylindrical heavy density (min 3.5 pcf or 56/kg/m<sup>3</sup>) glass fiber units jacketed on the outside with an all service jacket. Longitudinal joints sealed with metal fasteners or factory-applied self-sealing lap tape. Transverse joints secured with metal fasteners or with butt tape supplied with the product. The annular space between the insulated pipe or tubing and periphery of the opening shall be min. 1/4 in. (6 mm) to max 7/8 in. (22 mm).

See Pipe and Equipment Covering —Materials (BRGU) category in the Building Materials Directory for names of manufacturers. Any pipe covering material meeting the above specifications and bearing the UL Classification Marking with a Flame Spread Index of 25 or less and a Smoke Developed Index of 50 or less may be used.
  - Fill, Void or Cavity Material\*** — Sealant — Min 5/8 in. (16 mm) thickness of sealant applied within annulus, flush with both surfaces of wall.  
HILTI CONSTRUCTION CHEMICALS, DIV OF HILTI INC — FS-ONE Sealant or FS-ONE MAX Intumescent Sealant
- \* Indicates such products shall bear the UL or cUL Certification Mark for jurisdictions employing the UL or cUL Certification (such as Canada), respectively.



**Hilti Firestop Systems**

Reproduced by HILTI, Inc. Courtesy of  
Underwriters Laboratories, Inc.

January 26, 2015